

Sharif Abraham

Architects

-
Level 1/358 Lonsdale st,
Melbourne, 3000
Australia

Red Hill House

2001

-

Red Hill, Victoria
Photos - Sharif Abraham



The site for this project is on a slight hill overlooking the sea on the Mornington Peninsula. A weatherboard dwelling that originally sat within an established garden was demolished to make way for the new house. The views to the sea dictated the positioning of the house to be between the established garden and the open paddocks.

A bridge structure, designed to resemble a "jetty", was devised to link the new house to the garden. Through its scale, it extends the ground plane to the new house, establishing a strong connection with the garden.

The lower rooms accommodated the sleeping quarters and a studio. Their

arrangement is expressed in the composition of the lower part of the south facade. Here the alternating pattern of bedrooms and bathrooms is played out in the rhythmical wall treatment.

The upper living spaces are arranged according to their relationship to the different aspects of the site. The ones to the south are oriented towards the sea and expressed in a single large window. The ones to the north face the garden and are designed as an attached wing of three separate bays that disguise a single living space, providing an external scale and formal quality appropriate to the established garden.

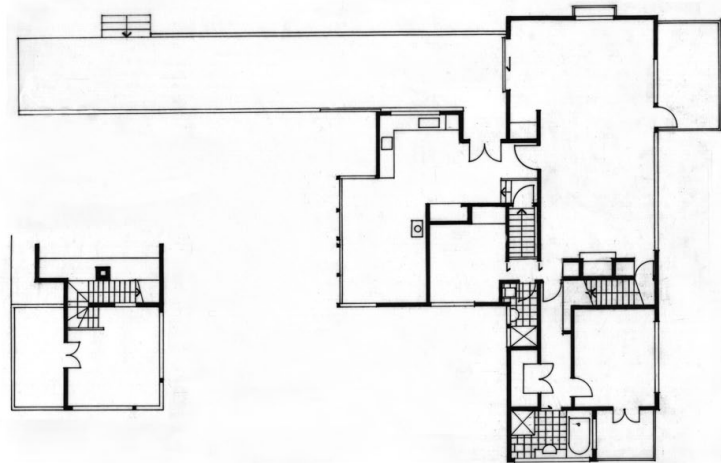
Above the living spaces, a high room breaks the roof line and projects into





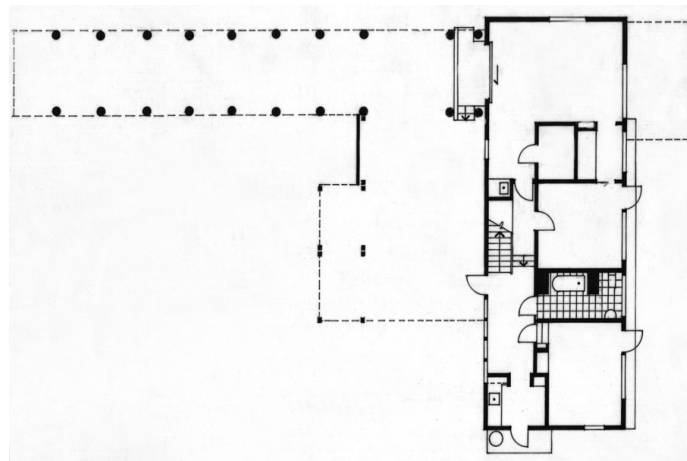
the treetops. It's suspension lets it live in the bush, just when the trees thin out right in the midst of the foliage. A ring beam clasps this exceptional room and provides an interesting scale to its structure, expressing light, shadow and weight through its profile. The corner windows of the room open completely at the height of the branches, entering into dialogue with the sky, the sea and the site itself.

<http://www.sharifabraham.com>



Upper Room

First Floor



Ground Floor