

## Sunbury low cost housing

2002

-

Sunbury, Victoria

Photos - Sharif Abraham



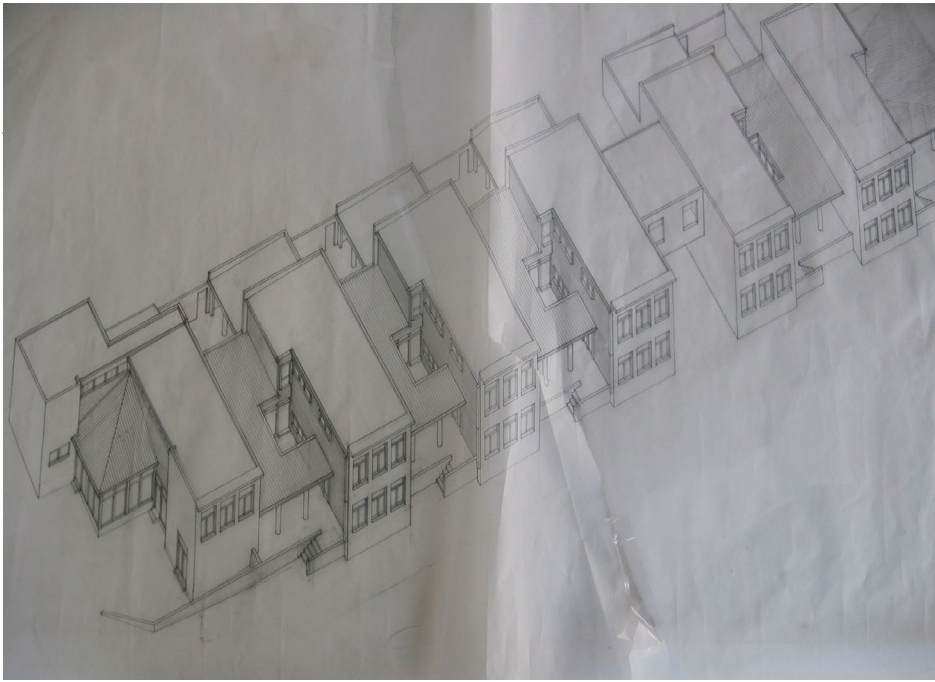
The development is located on a site adjacent to Victoria University in Sunbury. The buildings on the surrounding the site are formally austere, being original built and used as to accommodate a mental asylum prior to their transformation into a university in the 1990s.

The site is on positioned at the entrance to the university grounds and are consequently very visible. The idea was to design a series of build-

ings that connected with the strong formal qualities of the buildings on the University grounds. Conceived as series of two level "bookends" in concrete masonry with a timber low-rise infill, their configuration resulted in a structure with substantial visual gaps. This "permeability" enabled the views towards the existing university buildings to be retained from the streetscape. Two low walls slip past each other to define the entry to each dwelling. Ascending

between these walls the visitor arrives at an expansive deck with spectacular views to the surrounding landscape. The planning of each dwelling is devised around a central courtyard. The courtyard abuts the deck and the interior spaces are positioned around it, providing a focus for the spaces on both levels, and a green space to be incorporated in the physicality of the interior of each dwelling.

This proposal demonstrates how



Architects



alternate models for housing can be achieved using very affordable materials. The architect was financially involved in the acquisition of the land and funding the project. All buildings were sold off the plan prior to construction.

<http://www.sharifabraham.com>

