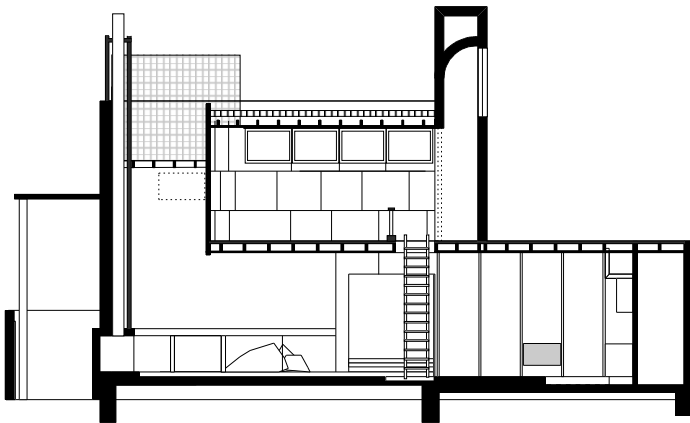


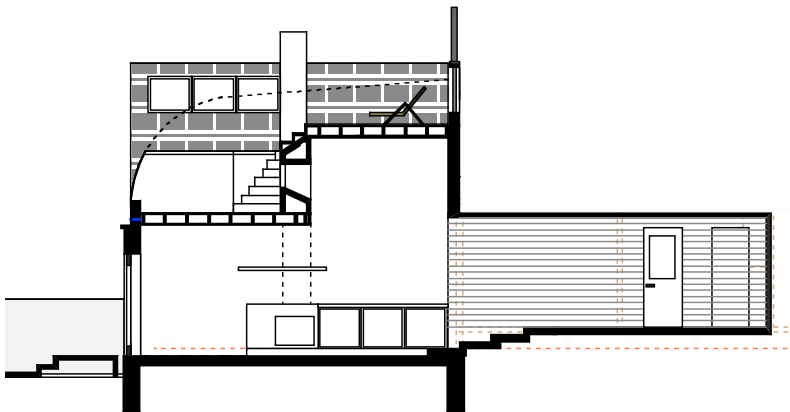
original house), the addition established a compelling relationship with the site. It engaged directly with the "physicality" of its earth. A grass roofed studio was located at the rear of the site. It is connected to the house via a large ramp. An atrium, geometrically modelled on the configuration of the "union Jack", provides the only form of natural light to its interior. At night the artificial light from this interior makes the structure a beacon of colour and geometry, engaging the surroundings area with the house, the land and the site itself. The design is currently being developed for the commencement of construction

<http://www.sharifabraham.com>

Model- studio atrium



Section living



Section roof deck

