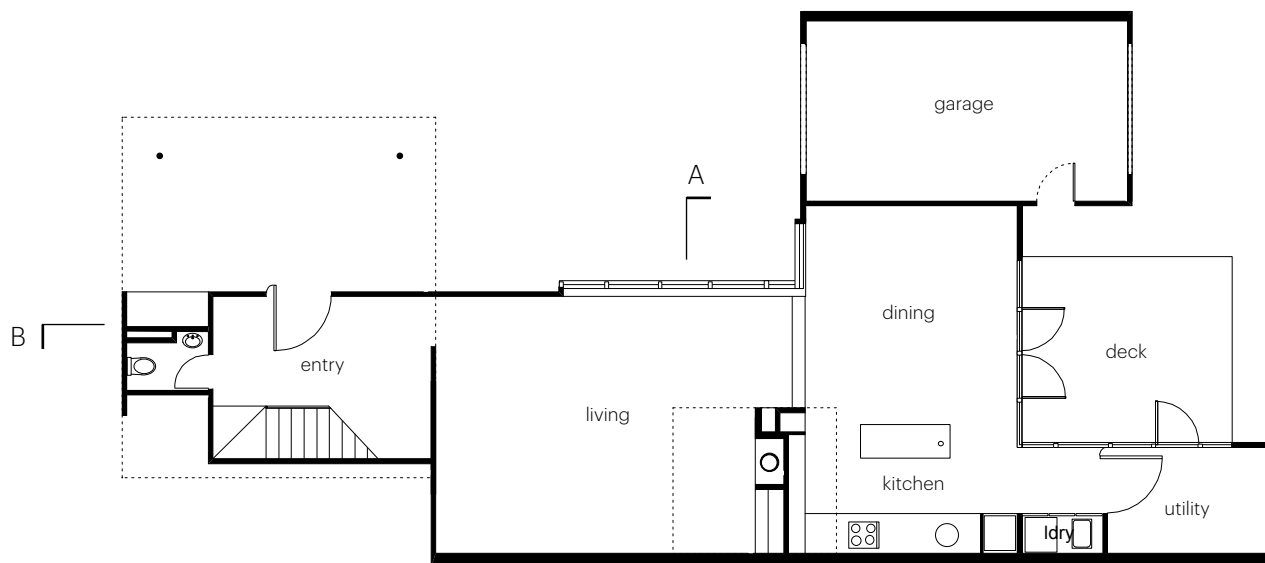


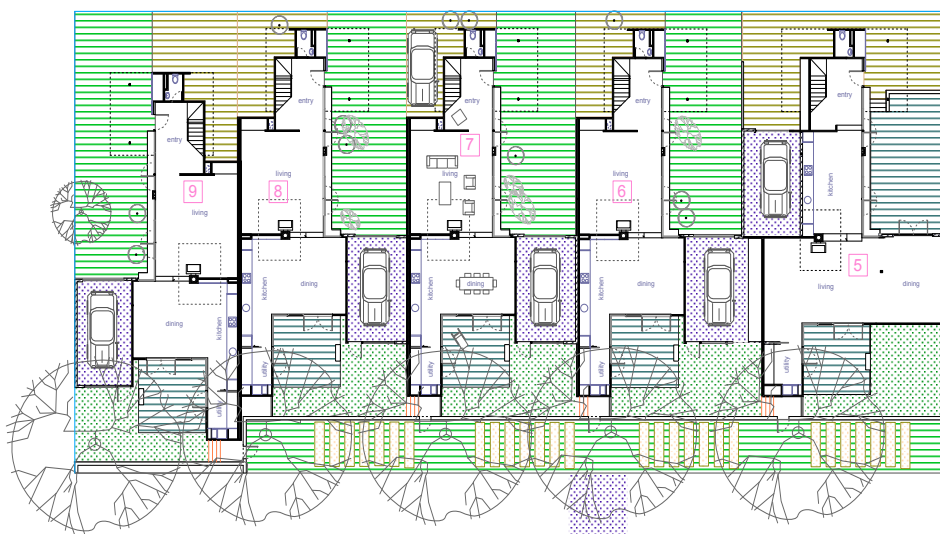
Prototype House

2004

Mt Ridley, Victoria
Status- Project



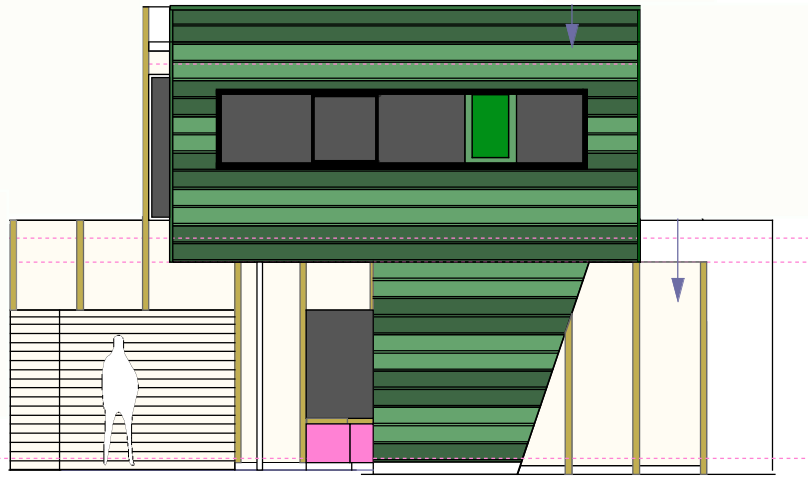
Ground Floor Plan



Site Plan

The proposition was to develop a simple prototype house that could be built by a speculative building company on new housing estates either as a freestanding dwelling or in tandem. Designed for a 10.5 m x 26.0 m standard subdivision block, it allowed for slight adjustments to accommodate different width, for example, at corner allotments .

From the outset our principle concern was to deal with the garage, and to avoid it dominating the facade. The idea was to take the "back yard" and to locate it to one side of the allotment - thus making it a side yard, and plan the living spaces around it. Being elongated it maximised the outlook



Section A

and natural light to the interior. The garage is located at the rear of this space and the landscaping is designed to disguise the vehicular paths to it. Additionally there is provisions for flexibility so that the garage could be converted to an additional room if need be.

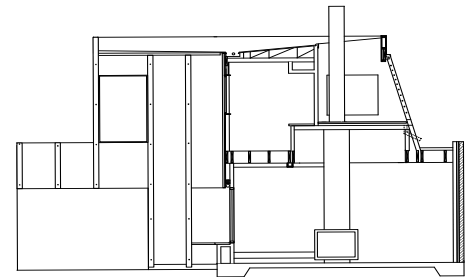
The upper bedrooms are also oriented around the side yard and the

main bedroom is suspended above the entry.

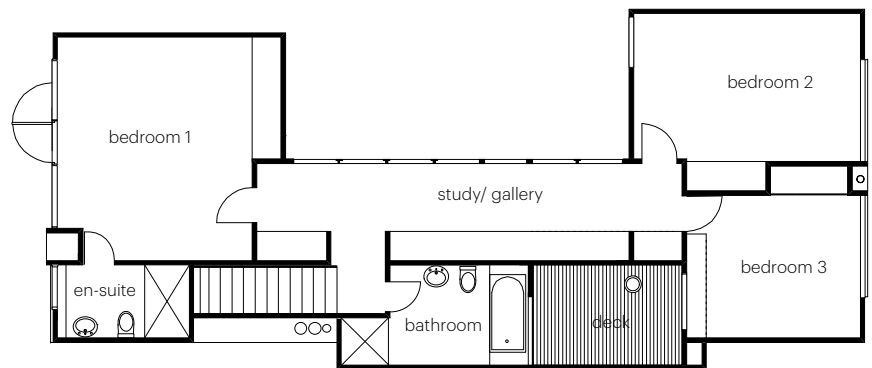
At 125 m2 this building has a small footprint. With careful planning and extended outlooks, the house provides greater engagement with the outdoors and feels more spacious.

The project was commissioned by Karolos Construction Group and fully costed to compete within that estate housing market.

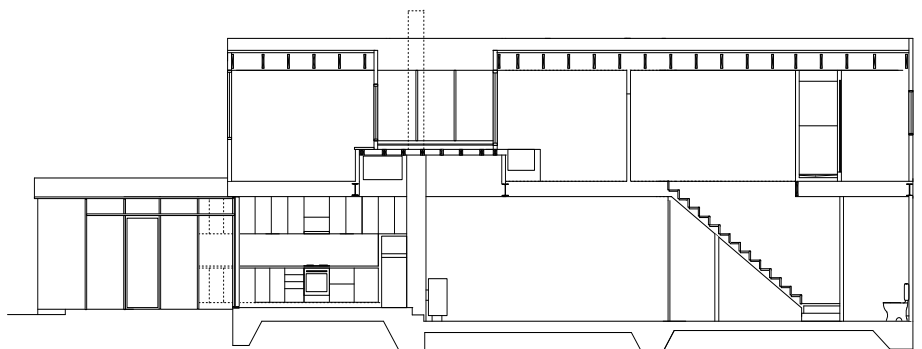
<http://www.sharifabraham.com>



Section A



Upper Floor Plan



Section B