

Sharif Abraham

Richmond Apartments

Architects

-
+61 3 9642 2558

studio@sharifabraham.com

2009

-
Richmond, Victoria

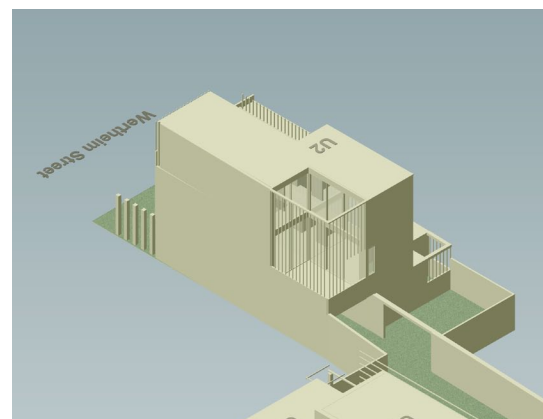
In collaboration with Nicholas Dour Architects



This proposal is for a six unit development on an unusual site facing two street front-ages, with the interior landlocked by ad-joining suburban housing. The form of the building is determined by the surrounding urban conditions, planning overlays and restrictive building envelopes.

Of principle concern was providing a sense of address to the units facing the interior of the site. A large outdoor space with direct visual connection with the street and entered via the undercroft of one on the units in introduced as an extension of the street scape. In addition to providing manoeuvring area for vehicular access, this space also provided provisions for abundant natural light and outlook, as well as being big enough avoid overlooking to the adjoining properties.

The units facing the streets were designed to resolve the massing and context issue. Through a delicate and sympathetic manipulation of materials and form we were able to achieve a sense of presence for these units which made the development distinct whilst at the same time sympathetic to it's surrounds.





In light of the difficulties associated the layout of the site, we were able to obtain a planning permit for this development with the support of the local council and the majority of the neighbours.

The developer sold the land with a permit prior to construction.

<http://www.sharifabraham.com>

